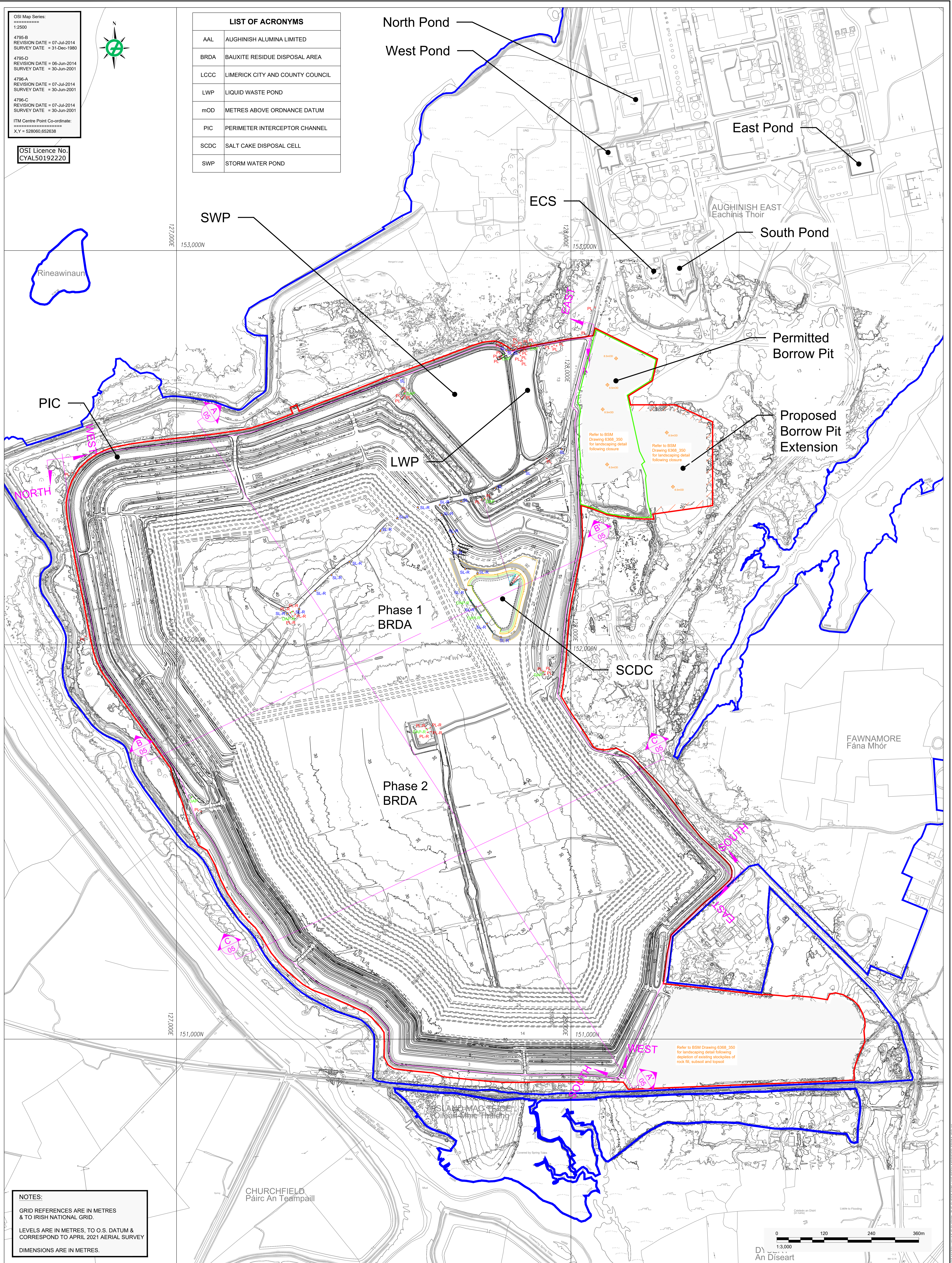


OSI Map Series:
 1:2500
 4795-B
 REVISION DATE = 07-Jul-2014
 SURVEY DATE = 31-Dec-1990
 4795-D
 REVISION DATE = 06-Jun-2014
 SURVEY DATE = 30-Jun-2001
 4795-A
 REVISION DATE = 07-Jul-2014
 SURVEY DATE = 30-Jun-2001
 4795-C
 REVISION DATE = 07-Jul-2014
 SURVEY DATE = 30-Jun-2001
 ITM Centre Point Co-ordinate:
 X,Y = 528960,652838

OSI Licence No.
 CYAL50192220



LIST OF ACRONYMS	
AAL	AUGHINISH ALUMINA LIMITED
BRDA	BAUXITE RESIDUE DISPOSAL AREA
LCCC	LIMERICK CITY AND COUNTY COUNCIL
LWP	LIQUID WASTE POND
mOD	METRES ABOVE ORDANCE DATUM
PIC	PERIMETER INTERCEPTOR CHANNEL
SCDC	SALT CAKE DISPOSAL CELL
SWP	STORM WATER POND



NOTES:
 GRID REFERENCES ARE IN METRES & TO IRISH NATIONAL GRID.
 LEVELS ARE IN METRES, TO O.S. DATUM & CORRESPOND TO APRIL 2021 AERIAL SURVEY
 DIMENSIONS ARE IN METRES.

LEGEND			
	AAL OWNERSHIP BOUNDARY		6m HIGH STREET LIGHT / RAISED DURING OPERATIONS
	APPLICATION BOUNDARY		2m HIGH PLATFORM LIGHT / RAISED DURING OPERATIONS
	GROUND CONTOUR (mOD)		2m HIGH GREEN FLUORESCENT LIGHT INDICATES LOCATION OF DIPHTHERIE TREATMENT DISPENSER OR SHOWER / RAISED DURING OPERATIONS
	PERMITTED BORROW PIT BOUNDARY		
	PROPOSED BORROW PIT EXTENSION FOOTPRINT		

CLIENT	PROJECT
AUGHINISH ALUMINA LTD.	BRDA RAISE PLANNING APPLICATION DRAWINGS
CONSULTANT	TITLE
YYYY-MM-DD 2021-Nov-30	Proposed Conditions during Operations: BRDA Lighting Plan
DESIGNED BK	PROJECT NO. 20143076
PREPARED POB	DRAWING NO. 07a
REVIEWED BK	REV. A
APPROVED BK	SCALE 1:3,000 A0



IF THIS MEASUREMENT DOES NOT MATCH WHAT IS SHOWN, THE SHEET SIZE HAS BEEN ADJUSTED FROM ISO/A4